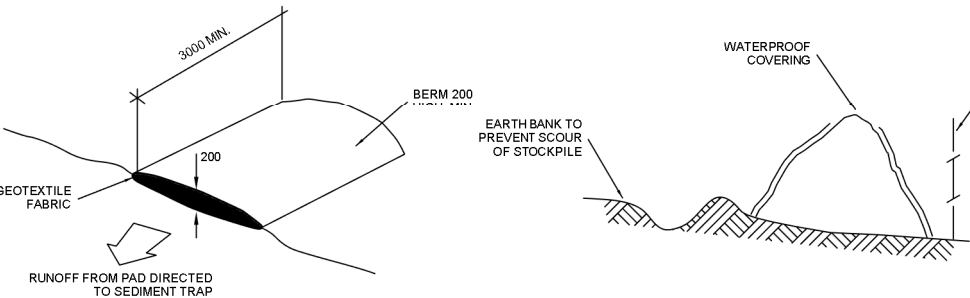


1 WASTE MANAGEMENT PLAN AND SEDIMENT & EROSION CONTROL PLAN
1 : 200

- LEGEND:**
- SITE BOUNDARY
 - SEDIMENT CONTROL FENCE
 - TEMPORARY FENCE

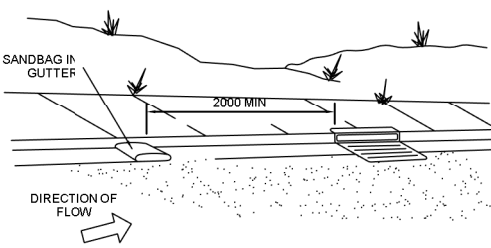


VEHICLE ACCESS TO SITE

NTS
VEHICLE ACCESS TO THE BUILDING SITE SHOULD BE RESTRICTED TO A SINGLE POINT SO AS TO REDUCE THE AMOUNT OF SOIL DEPOSITED ON THE STREET PAVEMENT.

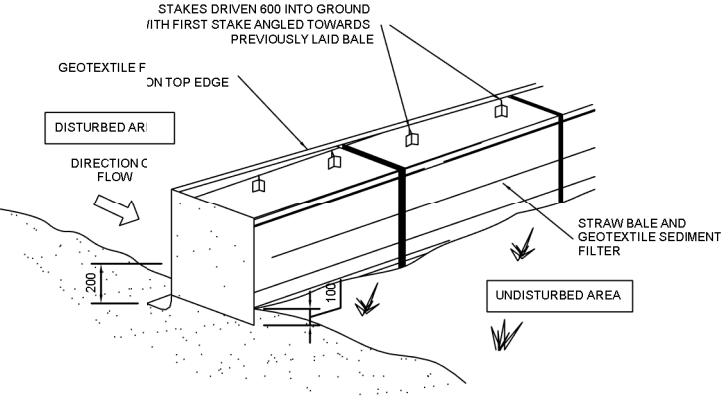
BUILDING MATERIAL STOCKPILES

NTS
ALL STOCKPILES OF BUILDING MATERIAL SUCH AS SAND AND SOIL MUST BE PROTECTED TO PREVENT SCOUR AND EROSION.
THEY SHOULD NEVER BE PLACED IN THE STREET GUTTER WHERE THEY WILL WASH AWAY WITH THE FIRST RAINSTORM.



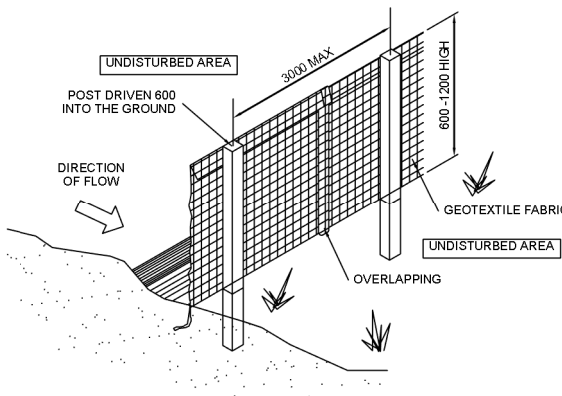
SANDBAG KERB SEDIMENT TRAP

NTS
CERTAIN CIRCUMSTANCES EXTRA SEDIMENT TRAPPING MAY BE NEEDED IN THE STREET GUTTER.



STRAW BALE DETAIL

NTS



SEDIMENT AND EROSION FENCE DETAIL

NTS

REV	DATE	DESCRIPTION	BY
A	13.12.2024	ISSUED FOR DA	DK

COPYRIGHT
All rights reserved.
These drawings, plans and specifications and the copyright are the property of Nemco Design and must not be used, reproduced or copied wholly or in part without the written permission of Nemco Design.



ADDRESS:
SUITE 4, LEVEL 1,
402-410 CHAPEL RD, BANKSTOWN,
NSW 2200
P: 9709 5555 M: 0422 606 228
E: abraham@nemcodesign.com.au

PROPOSED TWO STOREY DWELLING WITH POOL
9 QUEENSBURY ROAD, PADSTOW HEIGHTS
Lot A, DP 409706
WASTE MANAGEMENT PLAN AND SEDIMENT & EROSION CONTROL PLAN

JOB NUMBER: 24554	DWG NUMBER: A01.03	ORIGINAL SIZE: A3
DESIGNED BY: A.N.	DATE: 15.11.2024	
DRAWN BY: A.N.	SCALE: AS SHOWN	